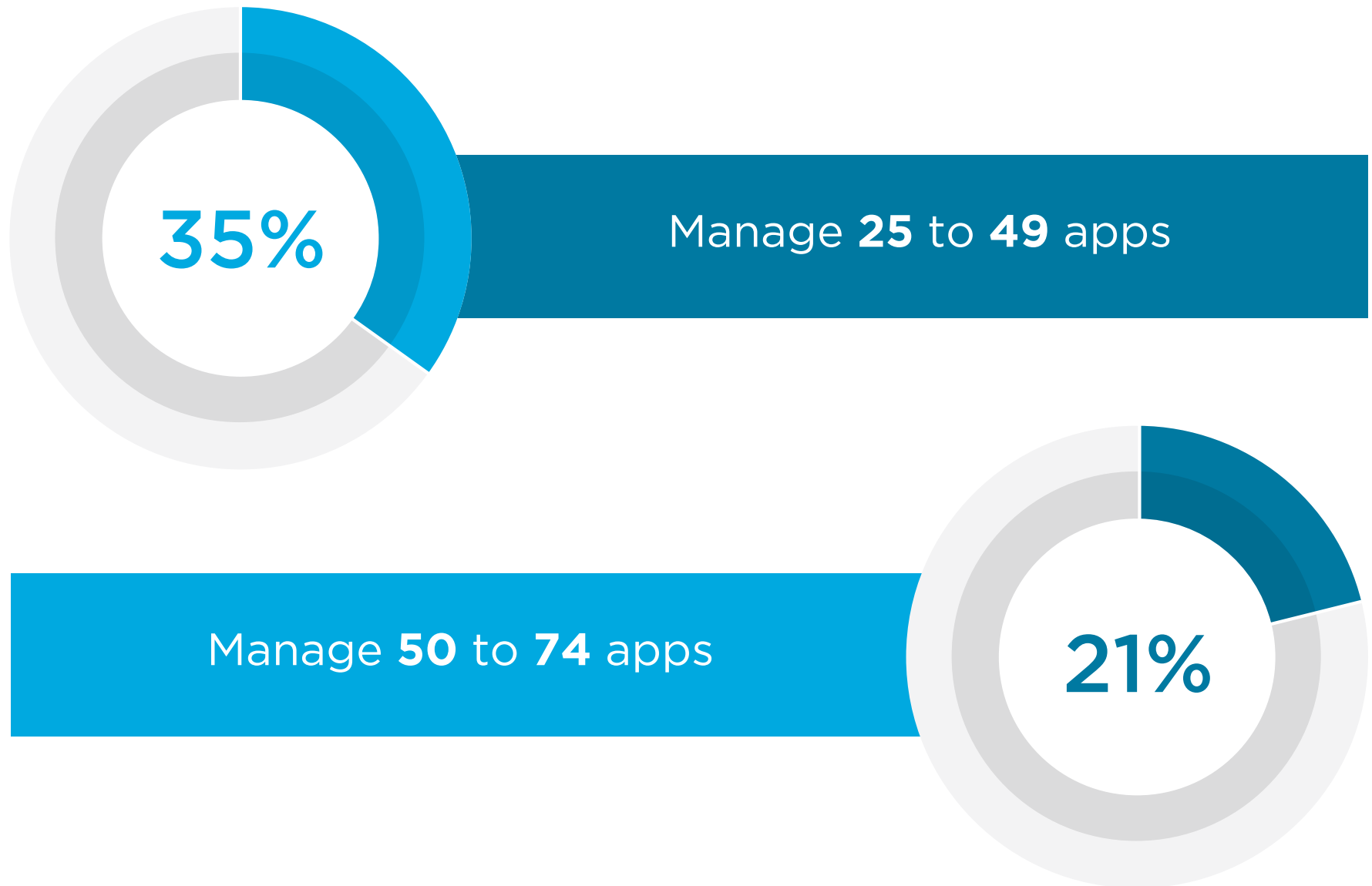


onelogin

---

State of Federal IT:  
The move to the cloud

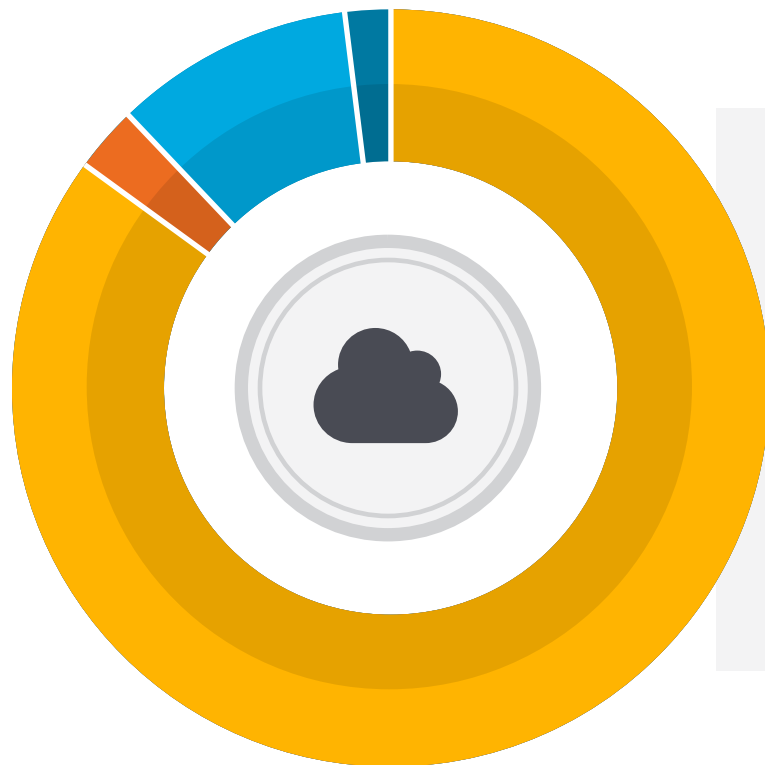
IT departments in federal agencies manage a lot of apps and a hybrid environment.



On average, agencies have 50.8% of their apps in the **cloud** and 49.2% **on-prem**.



But they are moving rapidly to the cloud.



### Expectation re: growth of cloud apps in next two years

- 85%** Will increase
- 3%** Will decrease
- 10%** Will stay the same
- 2%** I'm unsure

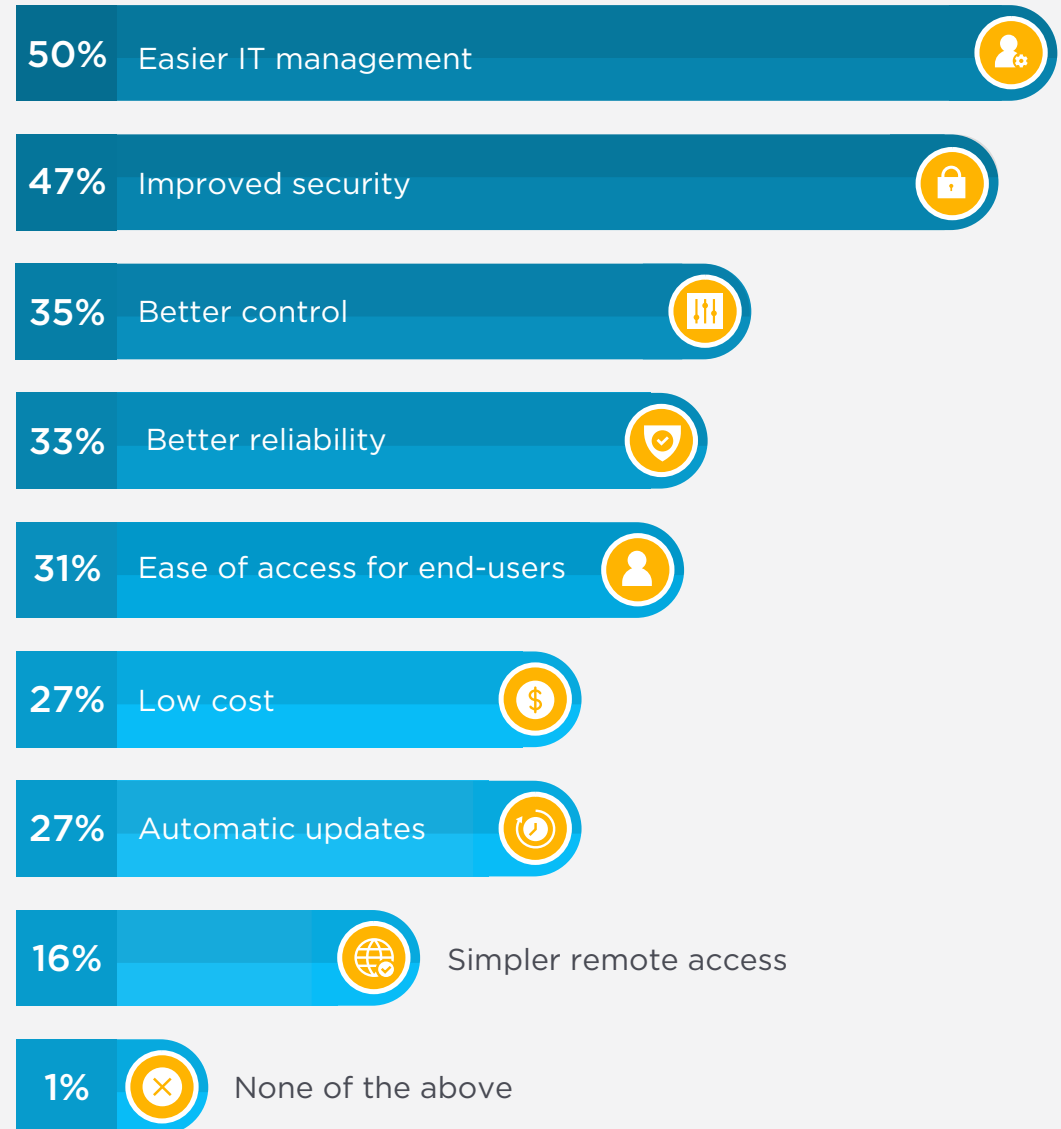
# What's driving the move to the cloud?

## Drivers to increase cloud usage

### TOP REASONS:

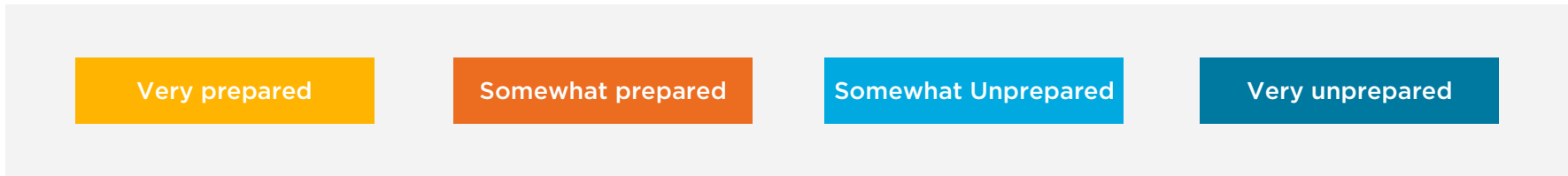
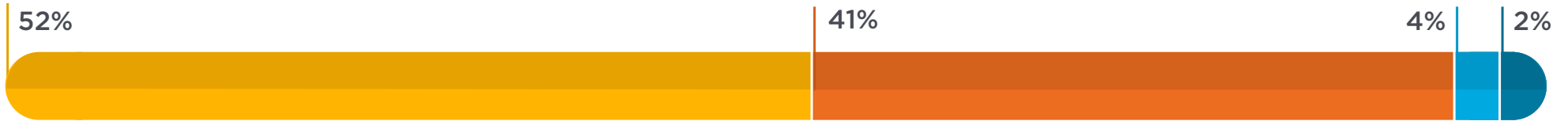
- Easier IT management
- Improved security

But IT sees many benefits...



# Federal IT departments feel prepared for the cloud, but have concerns

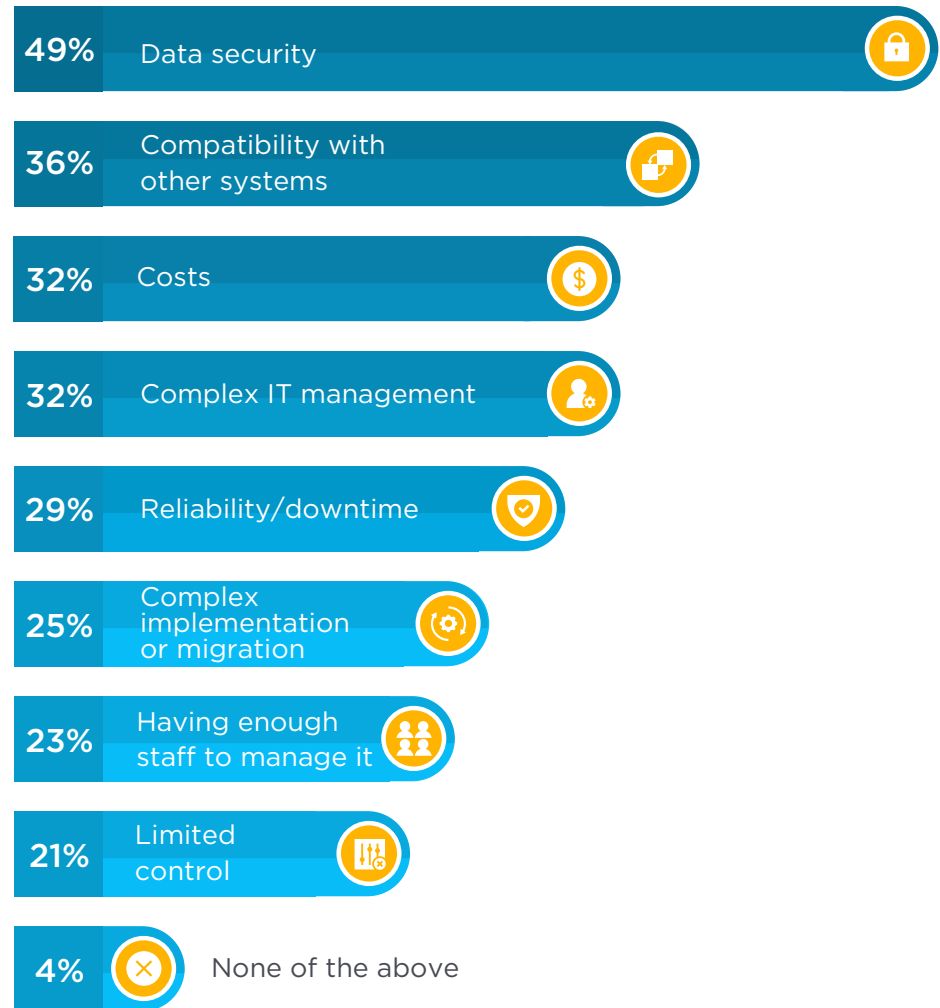
Preparedness to move to the cloud



But IT worries about cloud deployment and secure use,  
i.e. the **human element**.

**Data security is a larger concern for those in their position 5+ years.**

**Complex implementation or migration is more likely to be cited by those Director-level and above.**





## Read the State of the Federal IT Landscape Report

OneLogin recently conducted a survey of federal government IT professionals to better understand the state of agencies with regard to the move to the cloud and security. The full report is available for download at OneLogin.

[DOWNLOAD THE FULL REPORT](#)